



**ACS** College of Engineering  
Approved by AICTE New Delhi, Affiliated to VTU, Belagavi  
(A Unit of RajaRajeswari Group of Institutions)  
CET Code : E186 COMED-K : E003 PG CET : T918



# INTRA INSTITUTIONAL INTERNSHIP PROGRAM

## YEAR 2022-2023

### EVENT REPORT

Date : 12.10.2022 to 29.10.2022

#### Name of the Event: Industrial Visit to RRMCH

Rajarajeswari Medical College and Hospital (RRMCH) was set up by the Moogambigai charitable and Educational trust and is situated on Mysore Road Bangalore. RRMCH firmly commits itself to establish medical and paramedical excellence all over the state of Karnataka. It was established in the year 2005. It has been approved and recognized by Medical Council of India.

RRMCH offers super specialty clinics in cardiology, plastic surgery, orthopedic surgery, pediatric surgery, endocrinology, neurology and nephrology. It offers various treatments such as dysplasia, coronary angiogram coronary angioplasty, IVC filter placement, renal angiogram, pediatric minimally invasive surgery etc.

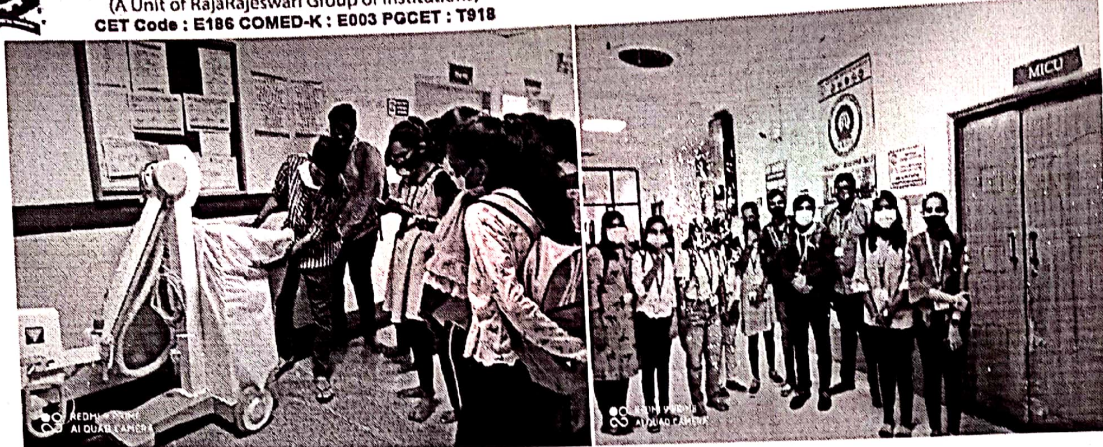


Students visited different departments in the hospital and were able to gain knowledge on the same. They were able to get the information regarding the working of different types of medical equipments and instruments.





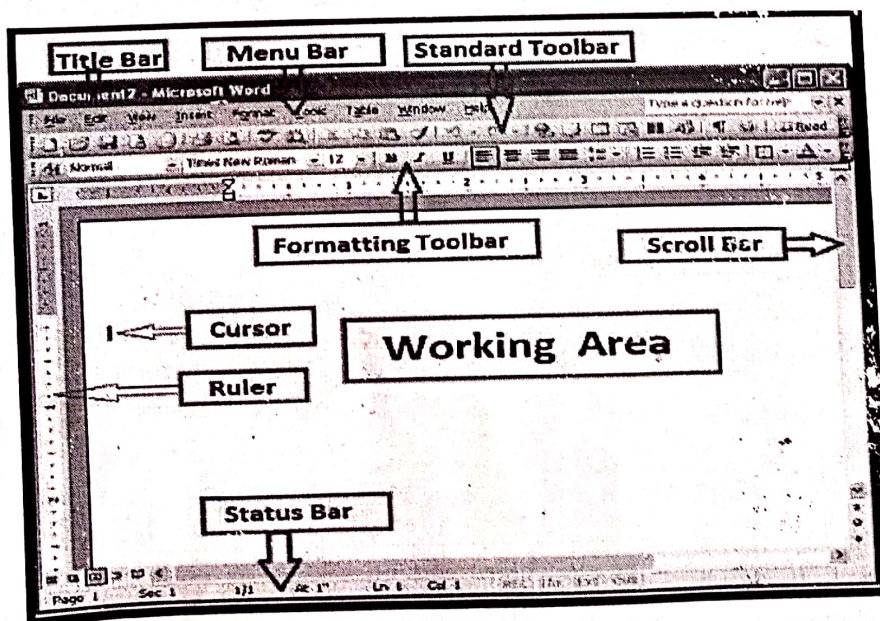
**ACS College of Engineering**  
Approved by AICTE New Delhi, Affiliated to VTU, Belagavi  
(A Unit of RajaRajeswari Group of Institutions)  
CET Code : E186 COMED-K : E003 PG CET : T918



## Name of the Event : MS Office Introduction & Lab visit

Mrs. Uma D Assistant Professor from BME department has taken a computer class on MS Office .

- Ms word
- Microsoft Equation.
- MS Equation.
- MS Tools.
- MS PowerPoint.
- How to Use MS Word Tools.
- Word Art.



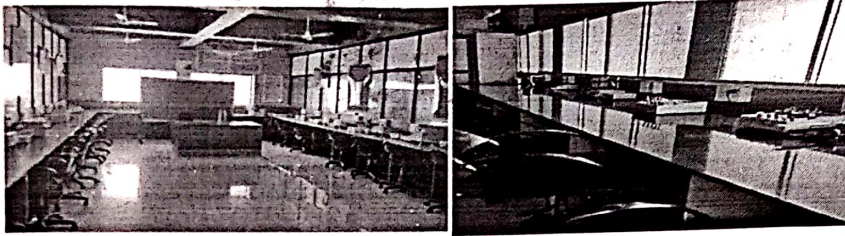


**ACS** College of Engineering

Approved by AICTE New Delhi, Affiliated to VTU, Belagavi  
(A Unit of RajaRajeswari Group of Institutions)  
CET Code : E186 COMED-K : E003 PG CET : T918



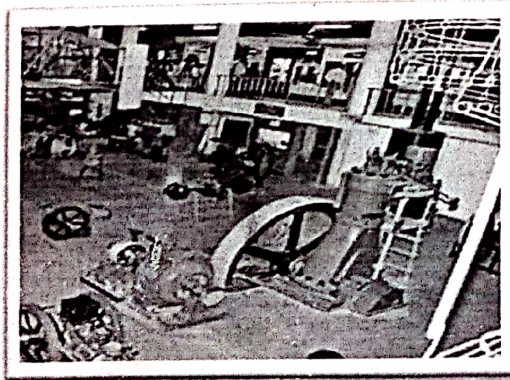
Visited all labs in Biomedical Engineering department.



- Biomedical Transducers Lab
- Analog Electronics Lab
- HDL Lab
- Logic Design Lab
- Microcontroller Lab
- Microprocessors Lab
- Clinical Instrumentation Lab-I
- Clinical Instrumentation Lab-II
- C++&Data Structures Lab

### **Name of the Event : Industrial Visit to Visveshvaraya Industrial and Technological Museum**

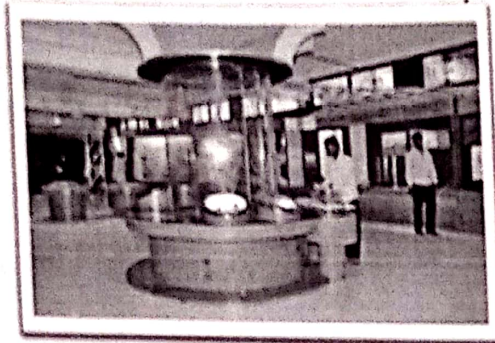
The museum has four floors with seven permanent exhibition halls and three special ones. Each hall has an astounding collection of interesting and informative touch-and-feel exhibits. Here's a look at the different exhibition halls that attract a swarm of visitors every day.





**ACS College of Engineering**

Approved by AICTE New Delhi, Affiliated to VTU, Belagavi  
(A Unit of Rajarajeswari Group of Institutions)  
CET Code : E186 COMED-K | E003 PG CET : 1918



## Name Of The Event : Industrial Visit to Sir M Visvesvaraya RainWater Harvesting Theme Park

The Bengaluru Water Supply and Sewerage Board (BWSSB) established the Sir M Visvesvaraya Rainwater Harvesting Theme Park at 5th Block Jayanagar, on an area of 1.1 acres in March 2011. This was a joint initiative of the Karnataka State Council for Science and Technology (KSCST), the BWSSB and the CII (Confederation of Indian Industry), in which Biome played an advisory role. The purpose of this was to help educate the citizens about RWH and its benefits and to provide information on water conservation options.

